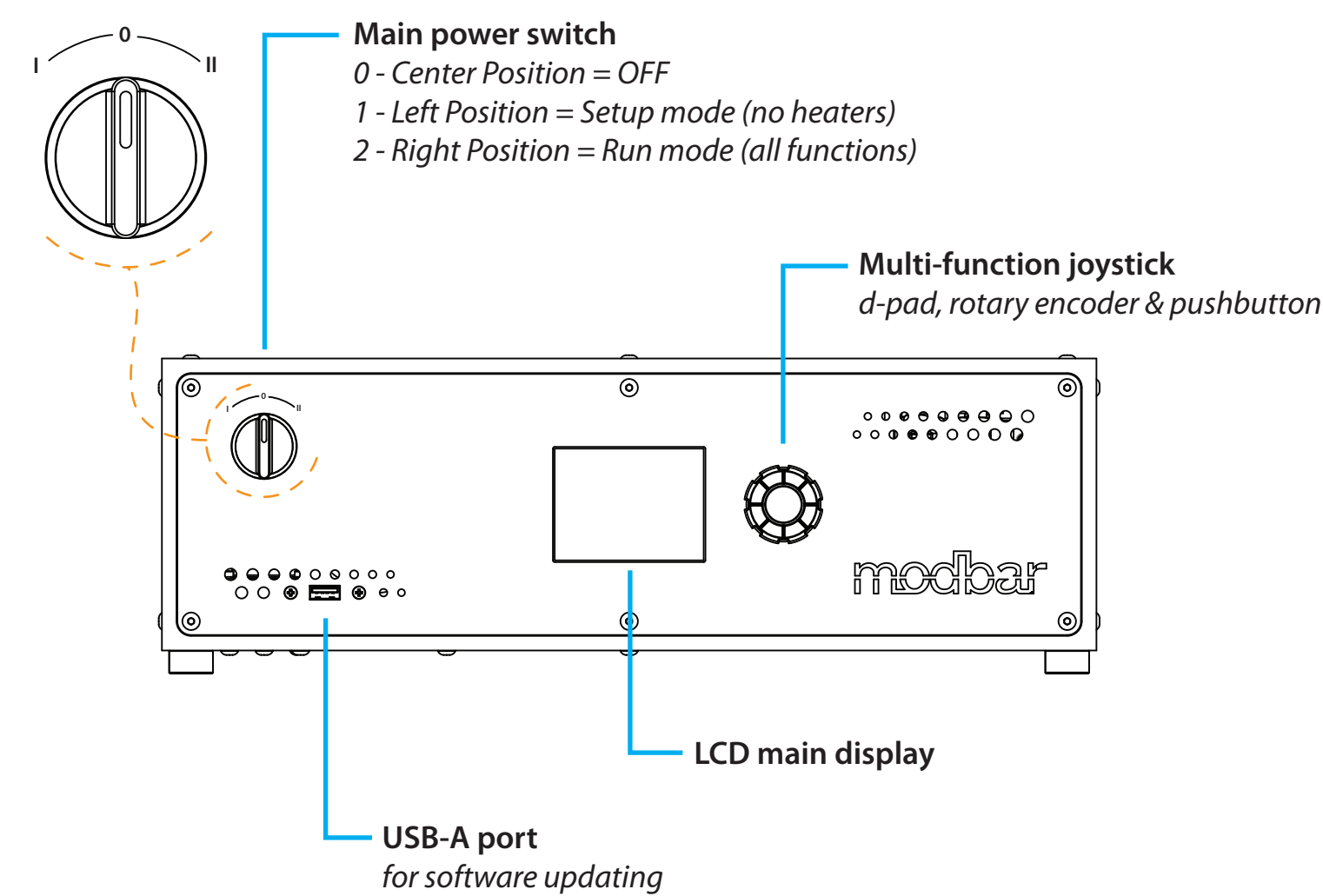
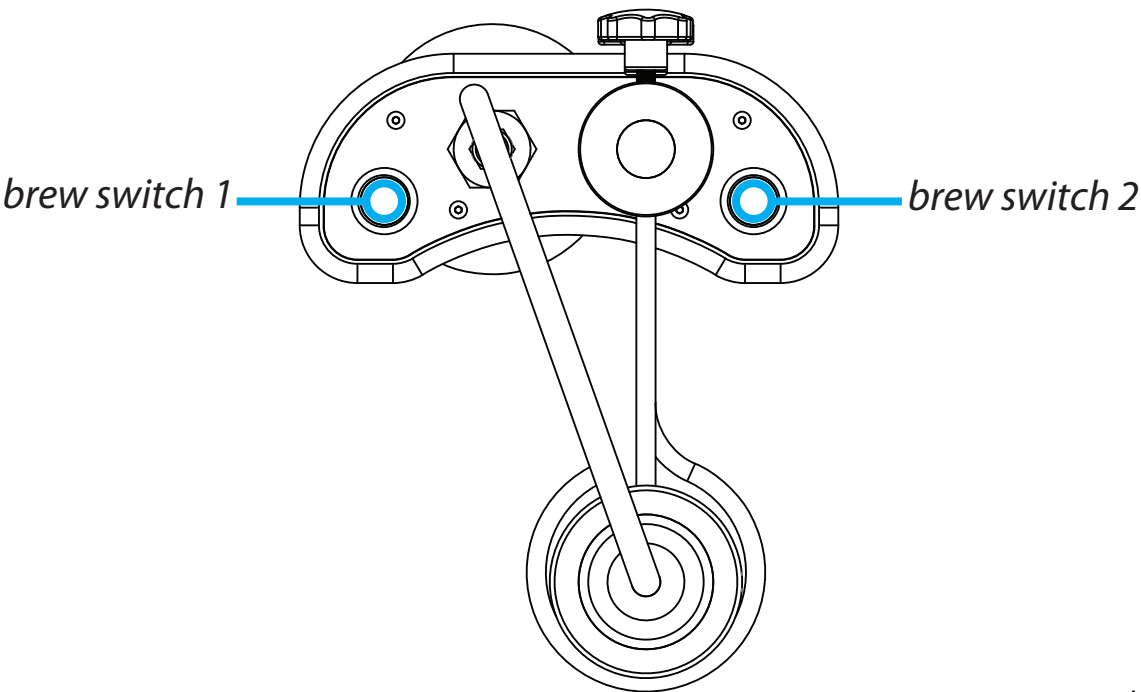


MODULE USER CONTROLS



TOP VIEW



IMPORTANT!

IT IS THE OWNER'S RESPONSIBILITY TO OBSERVE ALL APPLICABLE STATE AND/OR LOCAL PLUMBING AND ELECTRICAL CODES.

INSTALLATION MUST BE PERFORMED ONLY BY QUALIFIED PERSONNEL.



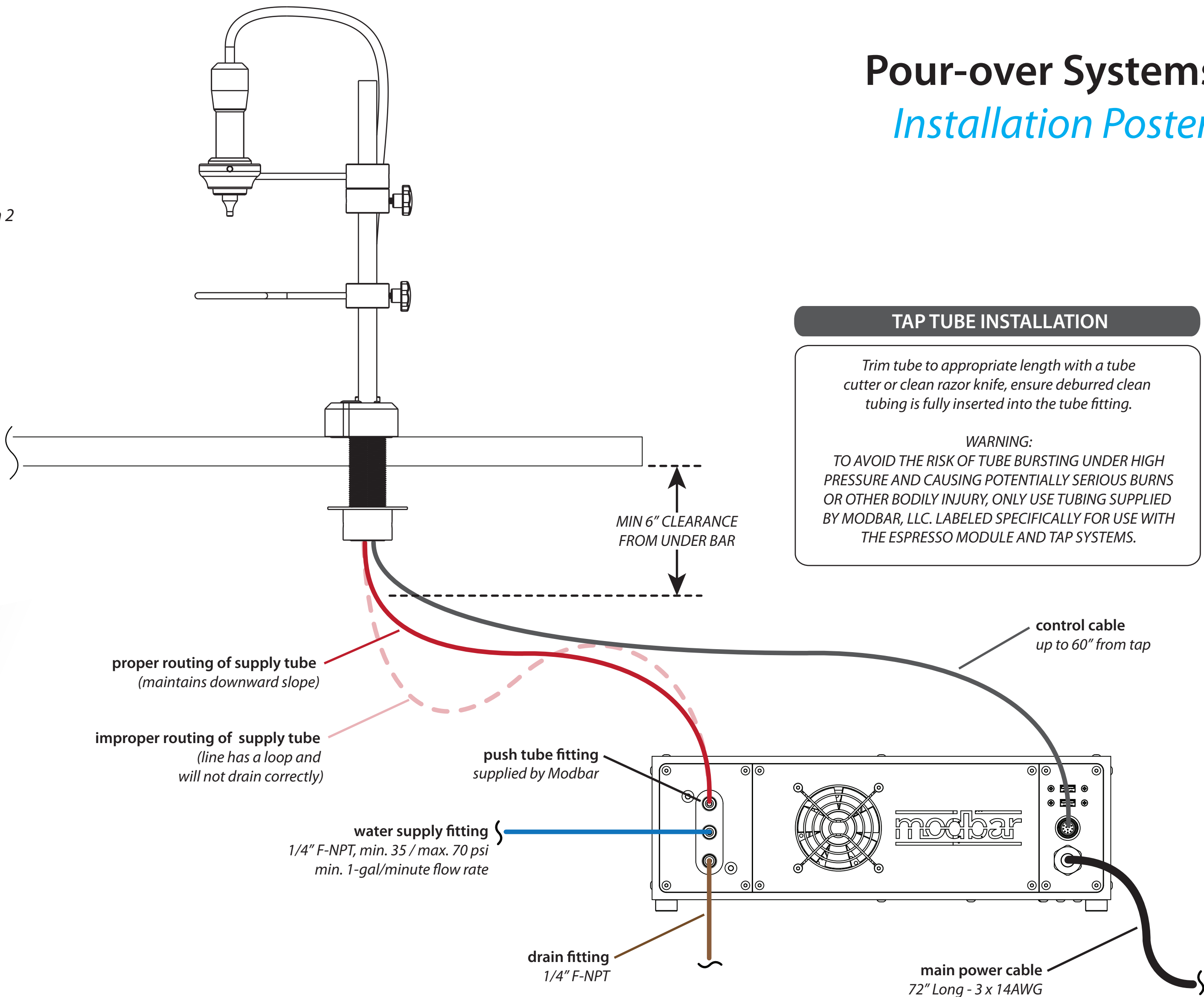
TO AVOID POTENTIAL DAMAGE, PLEASE REFER TO THE SETUP GUIDE PRIOR TO POWERING UP THE SYSTEM.

TAP TUBE INSTALLATION

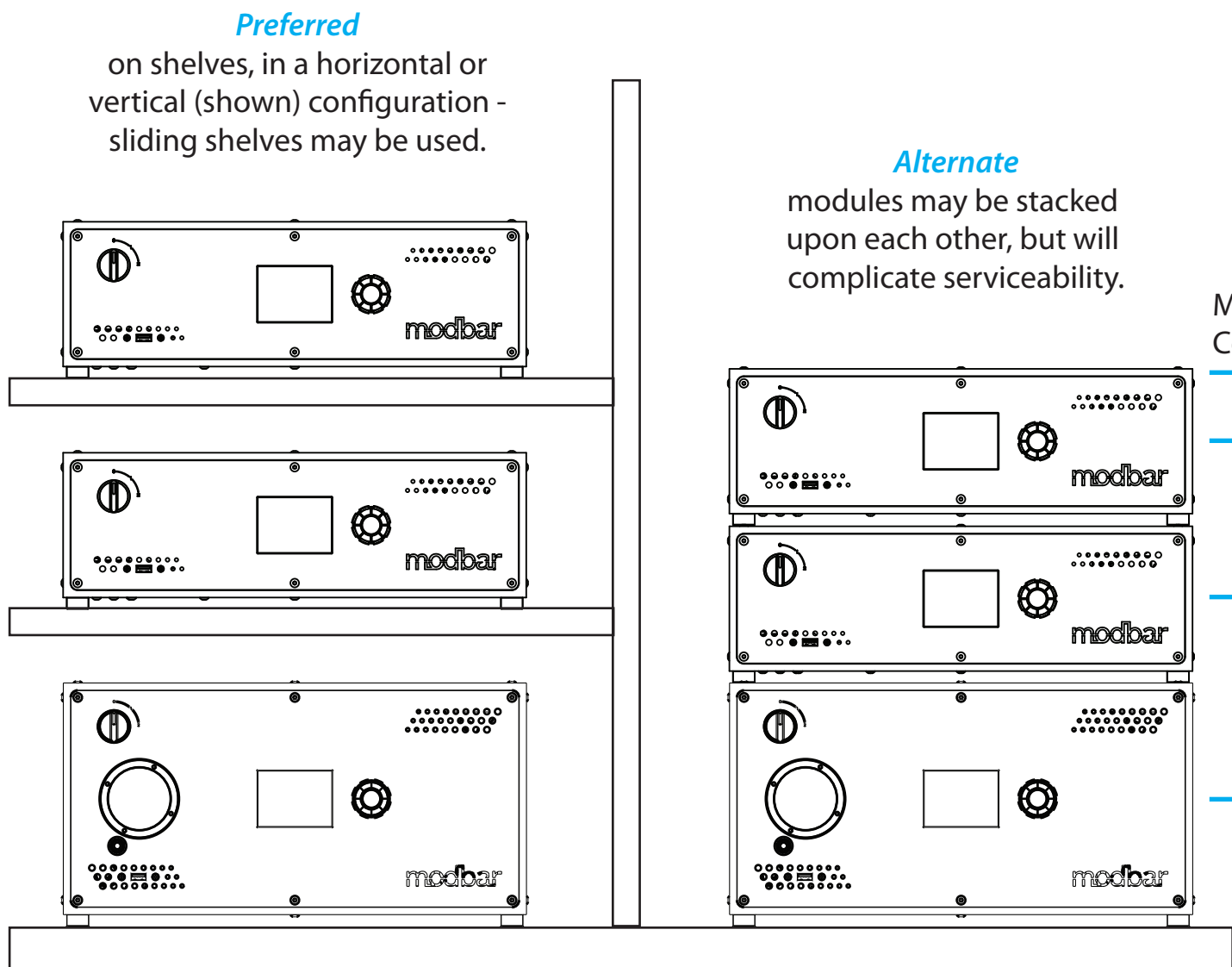
Trim tube to appropriate length with a tube cutter or clean razor knife, ensure deburred clean tubing is fully inserted into the tube fitting.

WARNING:

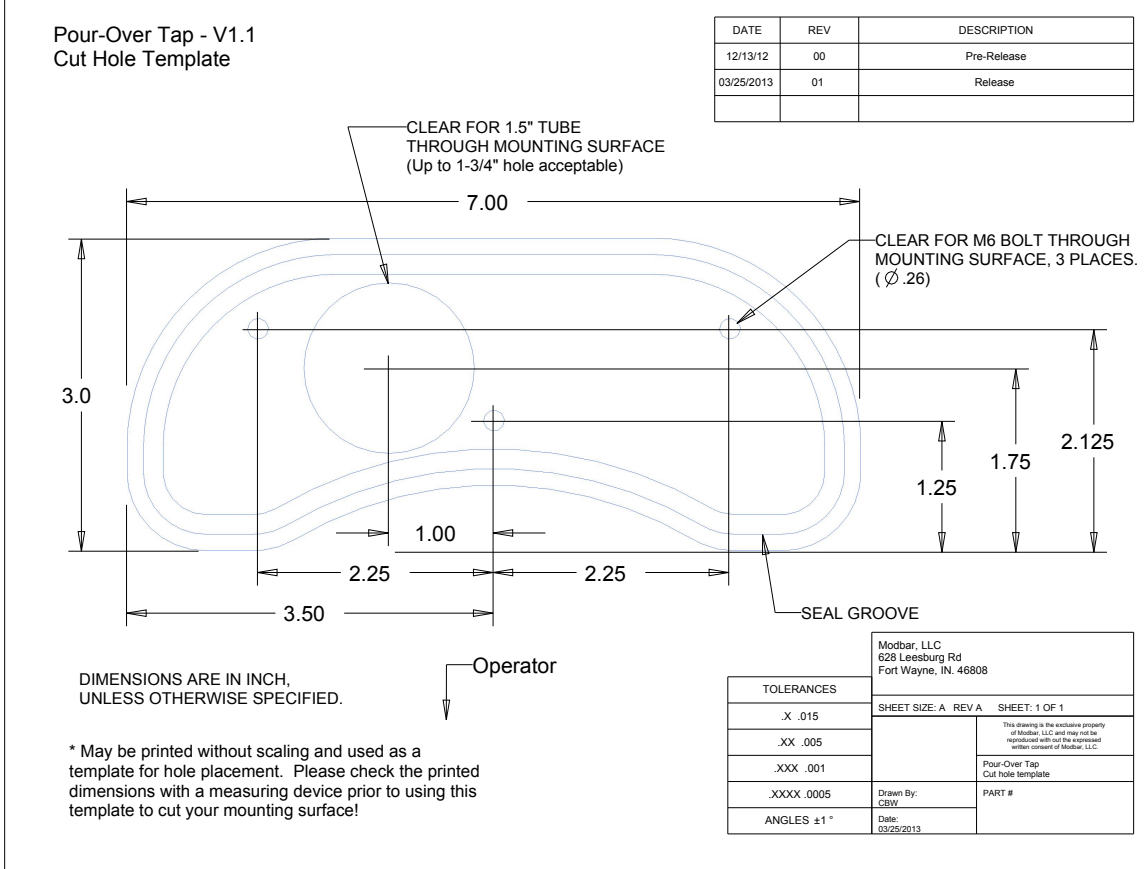
TO AVOID THE RISK OF TUBE BURSTING UNDER HIGH PRESSURE AND CAUSING POTENTIALLY SERIOUS BURNS OR OTHER BODILY INJURY, ONLY USE TUBING SUPPLIED BY MODBAR, LLC. LABELED SPECIFICALLY FOR USE WITH THE ESPRESSO MODULE AND TAP SYSTEMS.



POSSIBLE MODULE CONFIGURATIONS



USE THE PROVIDED CUT-HOLE TEMPLATE TO MODIFY YOUR BAR TOP



* If printing a digital copy of the cut-hole template it is important to check a known dimension on the print before use to be certain the template has not been scaled by your printer or printing software.

PRINT TEMPLATES AT 100% / CHOOSE THE "NO SCALING" OPTION

RECOMMENDED CLEARANCES

