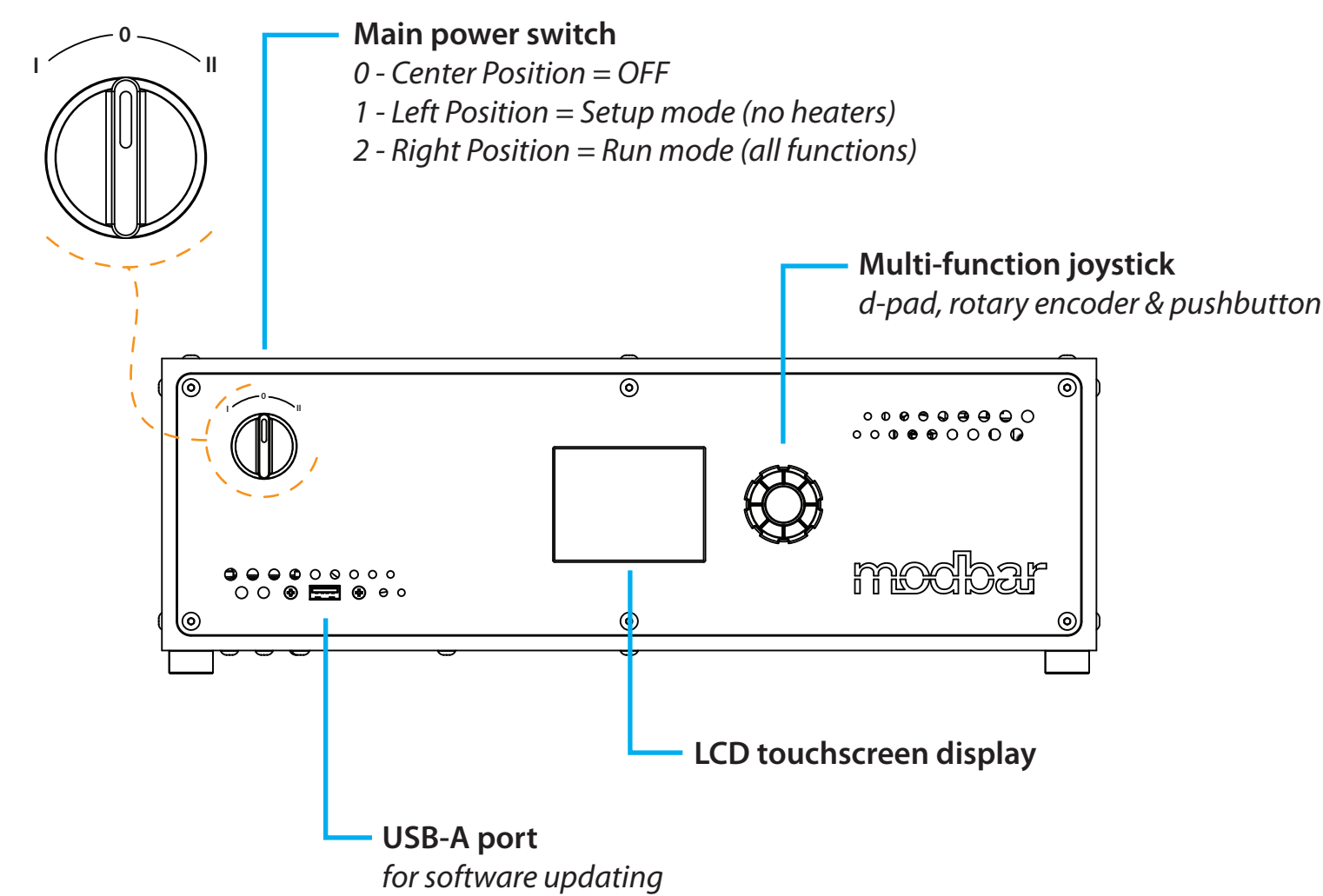


MODULE USER CONTROLS



IMPORTANT!

IT IS THE OWNER'S RESPONSIBILITY TO
OBSERVE ALL APPLICABLE STATE AND/OR
LOCAL PLUMBING AND ELECTRICAL CODES.

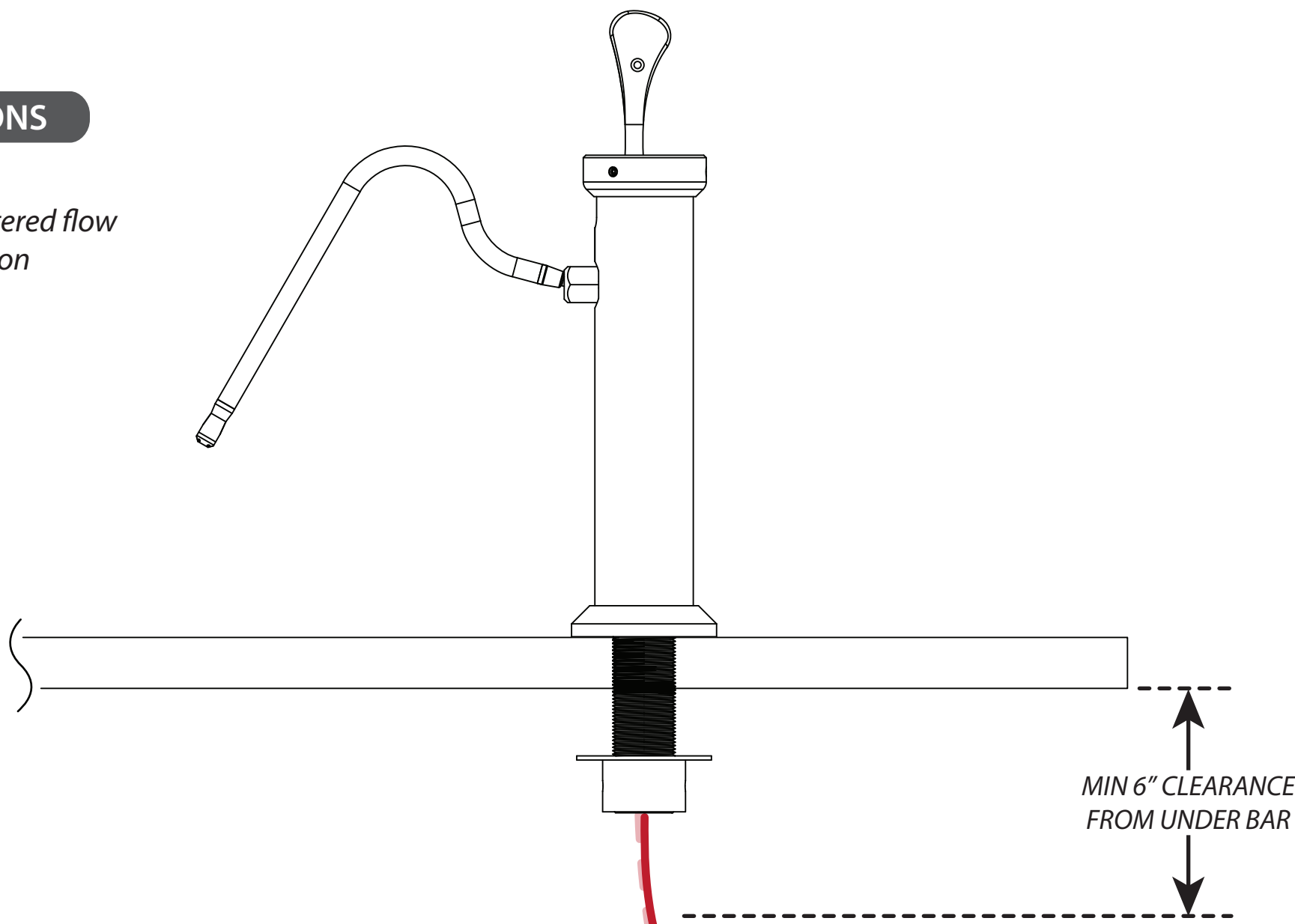
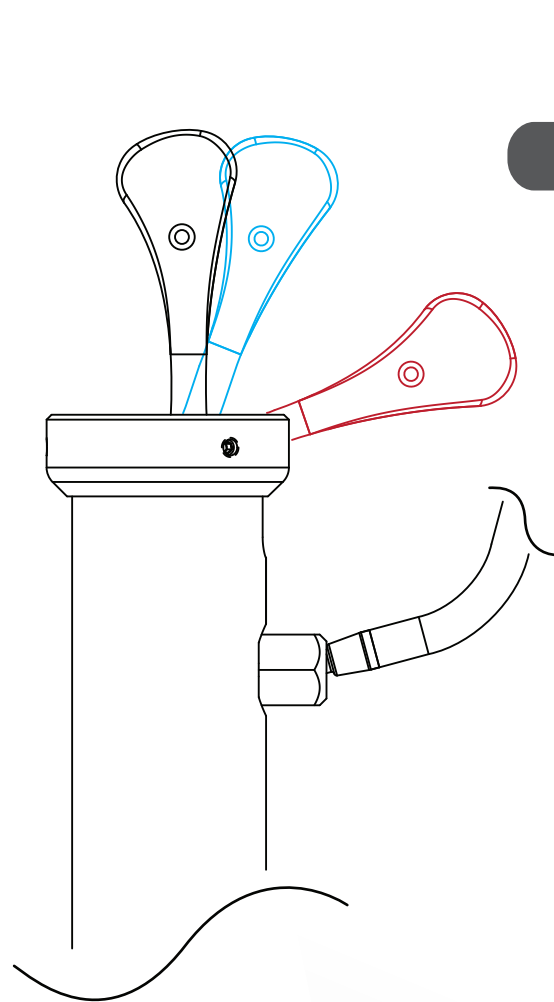
INSTALLATION MUST BE PERFORMED
ONLY BY QUALIFIED
PERSONNEL.



TO AVOID POTENTIAL DAMAGE,
PLEASE REFER TO THE SETUP GUIDE
PRIOR TO POWERING UP THE SYSTEM.

LEVER POSITIONS

- - home / off
- - steam / metered flow
- - steam / full on



proper routing of supply tube
(maintains downward slope)

improper routing of supply tube
(line has a loop and
will not drain correctly)

tap connection 1 & 2 (optional)
fitting(s) supplied by Modbar

water supply fitting
1/4" F-NPT, min. 35 / max. 75 psi
min. 1-gal/minute flow rate

drain fitting
1/4" F-NPT

main power cable
72" Long - 3 x 14AWG

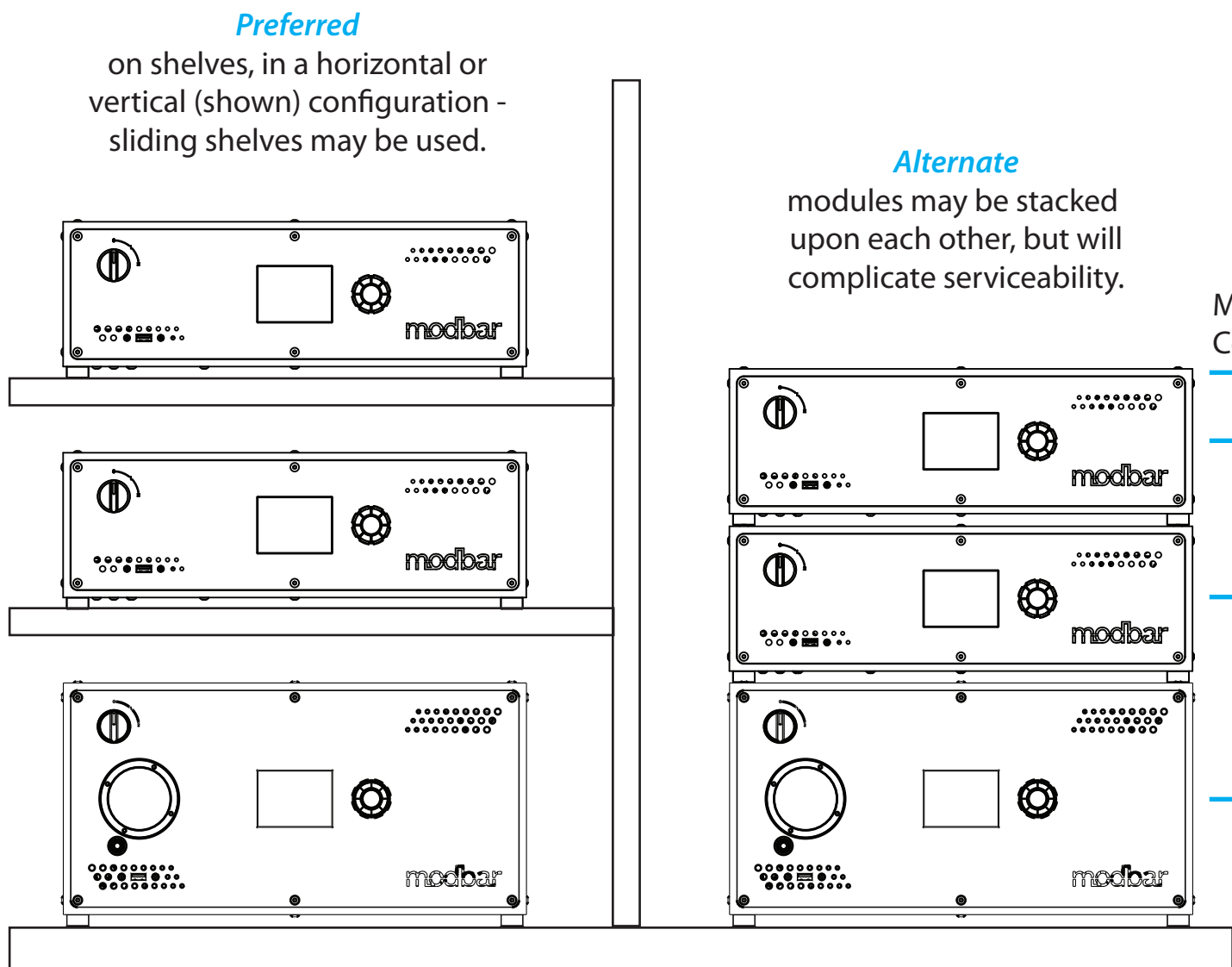
TAP TUBE INSTALLATION

Trim tube to appropriate length with a tube
cutter or clean razor knife, ensure deburred clean
tubing is fully inserted into the tube fitting.

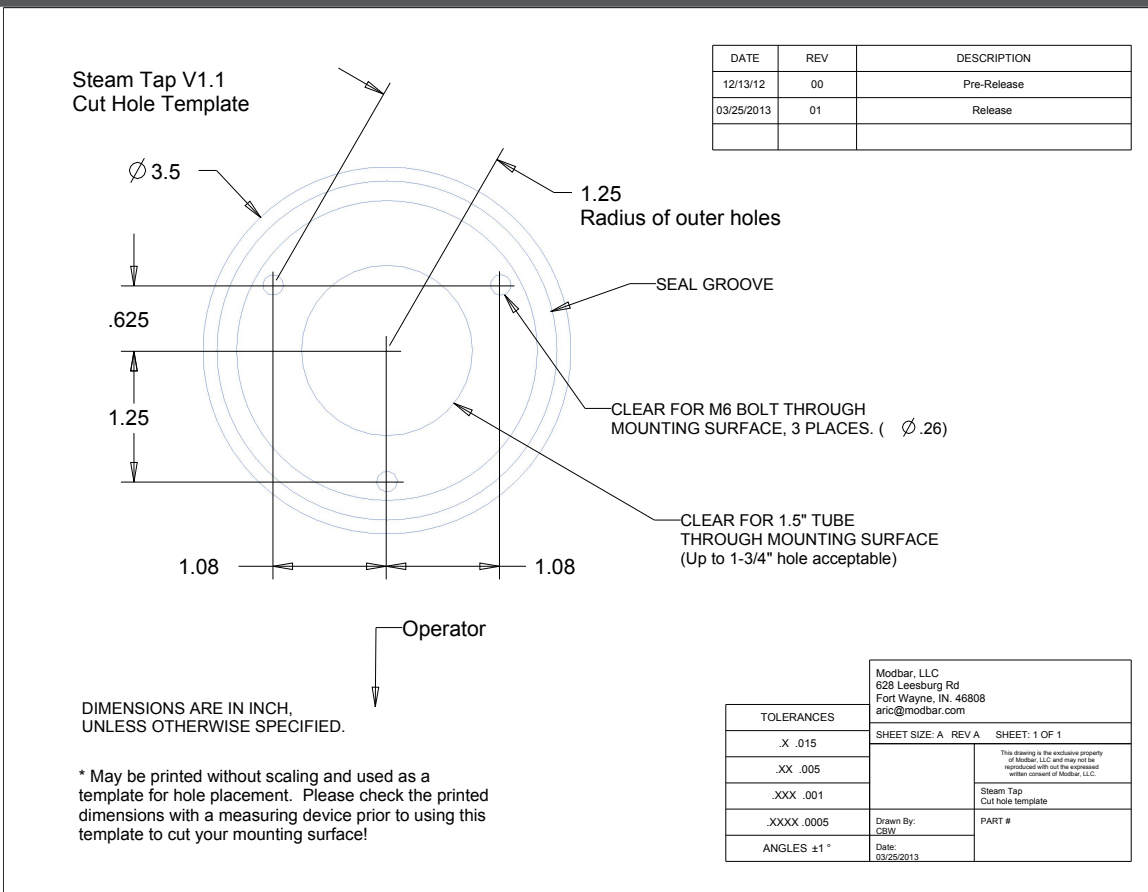
WARNING:

TO AVOID THE RISK OF TUBE BURSTING UNDER HIGH
PRESSURE AND CAUSING POTENTIALLY SERIOUS BURNS
OR OTHER BODILY INJURY, ONLY USE TUBING SUPPLIED
BY MODBAR, LLC. LABELED SPECIFICALLY FOR USE WITH
THE ESPRESSO MODULE AND TAP SYSTEMS.

POSSIBLE MODULE CONFIGURATIONS



USE THE PROVIDED CUT-HOLE TEMPLATE TO MODIFY YOUR BAR TOP



* If printing a digital copy of the cut-hole template it is important to check
a known dimension on the print before use to be certain the template
has not been scaled by your printer or printing software.

PRINT TEMPLATES AT 100% / CHOOSE THE "NO SCALING" OPTION

RECOMMENDED CLEARANCES

*espresso module shown, same clearances apply to side and back of steam module

